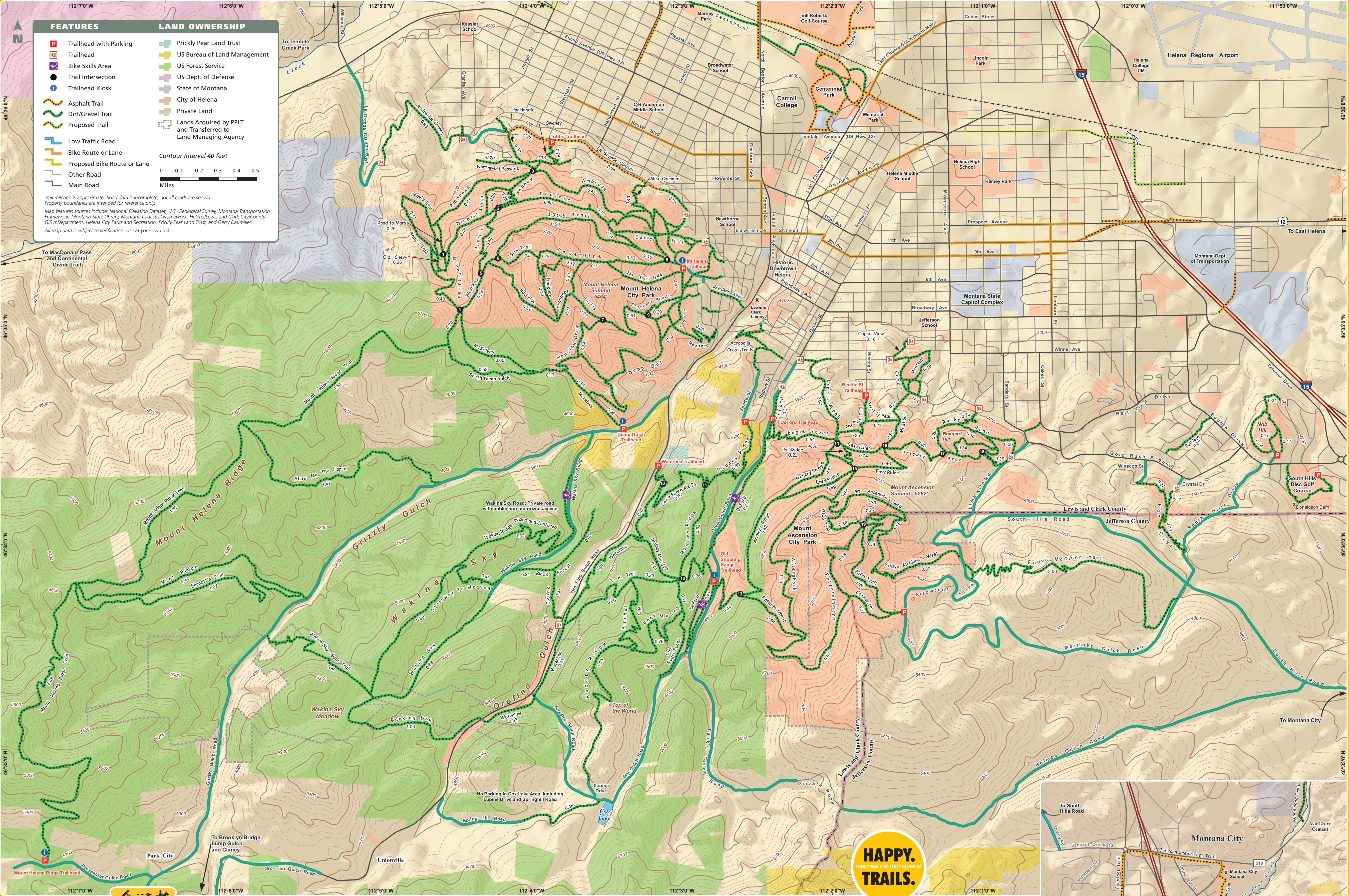


SOUTH HILLS TRAIL SYSTEM • HELENA, MONTANA



connecting land and people



ALL TRAIL USERS

- All trails on this map are for non-motorized use only.
- Stay on designated and marked trails.
- **Do not use closed or reclaimed trails.**
- **Never cut switchbacks.**
- Be courteous to your fellow trail users.
- No hunting or shooting on City of Helena lands. Check with the Helena Ranger District (449-5490) about hunting regulations on Forest Service lands.
- Pack out your litter.
- Know your weeds and try not to spread them.
- When approaching horses: Always speak and ask for instructions. Step to the downhill side of the trail to allow horses to pass.

- For large groups, tell other users how many are in your party when passing.
- No overnight camping on City of Helena lands.
- **Beetle kill trees can be a hazard!**
- **Be on the lookout for falling trees.**
- Strong winds may weaken unstable trees. Stay out of the forest when there are strong winds.
- Avoid dense patches of dead trees.
- If you are in the forest when winds pick up, head to a clearing out of reach of potential falling trees.
- Obey closure signs.

DOG OWNERS

- Keep dogs under control. Leash uncontrollable dogs.
- On City of Helena Lands, dogs must be on a leash for the first 100 yards past the trailhead.
- Do not allow dogs to chase wildlife.
- **Clean up after your dog.** Take plastic bags and dispose of waste properly.
- When it's hot, leave dogs at home or take water for them.
- Try to keep dogs on the trail because they will spread weeds.
- Avoid cycling with dogs, especially in hot weather.

MOUNTAIN BIKERS

- **Ride under control!** Ride slowly when descending, especially when you encounter blind corners.
- Avoid locking brakes and skidding in corners.
- Always yield, especially to uphill users.
- Politely alert others when passing or approaching.
- Do not ride trails when they are soggy. If you encounter a puddle, ride through it, not around it.
- Avoid riding in Mt. Helena Park during busy times (generally weekends and afternoons).
- Do not descend the 1906 Trail or the Powerline Trail on Mt. Helena at any time.

HORSE USERS

- Horses are allowed on National Forest lands only and are prohibited on City of Helena Open Lands.
- Keep trailheads clear of manure and trash.
- Know your horse's limitations.
- Ride your horse at a safe and controlled speed.
- Be especially careful when visibility is limited.
- Let other trail users know when it is safe to pass your horse.
- A hand out and down is a warning for others to slow down or stop.

HELP US SAVE THE TRAILS

Prickly Pear Land Trust and its volunteers work hard at maintaining our trail system. Here are a few ways you can help us keep this trail system the best in the west.

- Participate in a trail work day. See pricklypearart.org.
- Tell us if there is a problem or a hazard on a trail.
- Don't cut switchbacks or create new trails.
- Trails are expensive to repair and we all pay.
- Go and explore new areas. Dispersing use will help prevent conflicts in heavily used areas.
- This map shows public and private ownership for a reason. **Please respect private property!**
- Be kind to your fellow trail users and have fun!

